

Activity ID	Activity Name	Original Duration	Remaining Duration	Start	Finish	Total Float	2011			
							Sep	Oct	Nov	Dec
Reclamation in NPR3 ver.9.5 2011_11_21		115	23	21-Jul-11 A	19-Dec-11	-39				
Landside		115	23	05-Aug-11 A	19-Dec-11	-39				
	Installation Seawall Blocks to B6 and B7	55	0	13-Aug-11 A	18-Oct-11 A					
	Construct the Concrete Coping at B6 and B7	82	0	13-Aug-11 A	07-Nov-11 A					
	Laying Geotextile & Filter Material	86	0	05-Aug-11 A	14-Nov-11 A					
	Construct Open Channel U under IEC	33	0	23-Sep-11 A	30-Oct-11 A					
	Construct Open Channel U outside IEC	32	20	30-Sep-11 A	15-Dec-11	-36				
	Construct the Drainage Pipeline at West of Open Channel U	34	0	30-Sep-11 A	31-Oct-11 A					
	Construct the Drainage Pipeline at East of Open Channel U	28	17	01-Nov-11 A	15-Dec-11	-31				
	Unloading Sorted Public Fill behind new seawall	53	0	15-Aug-11 A	20-Nov-11 A					
	Reclamation	98	23	13-Aug-11 A	19-Dec-11	-39				
Seaside		100	23	21-Jul-11 A	19-Dec-11	-39				
	Construction of Outlet Pipe from City Garden	54	20	12-Oct-11 A	19-Dec-11	-34				
	Construction of B8	13	13	15-Nov-11 A	09-Dec-11	-31				

█ Actual Work
 █ Critical Remaining Work
 ▼ Summary
█ Remaining Work
 ◆ Milestone

Contract No. HK/2009/01

Contract Title : Wan Chai Development Phase II - Central - Wan Chai Bypass at HKCEC

Working Programme for Marine Works (Dredging and Backfilling)

ACTIVITY	START	FINISH	2010												2011												2012												2013																												
			Feb	Mar	Apr	May	Jun	Jul	Aug	Sep	Oct	Nov	Dec	Jan	Feb	Mar	Apr	May	Jun	Jul	Aug	Sep	Oct	Nov	Dec	Jan	Feb	Mar	Apr	May	Jun	Jul	Aug	Sep	Oct	Nov	Dec	Jan	Feb	Mar	Apr	May	Jun	Jul	Aug	Sep	Oct	Nov	Dec																		
Submissions before Works Commencement																																																																			
Submit silt curtain deployment plan	31/3/10	31/3/10	◆																																																																
Submit silt screen deployment plan	31/3/10	31/3/10	◆																																																																
Submit measures to mitigate noise impact	31/3/10	31/3/10	◆																																																																
Cross Harbour Watermains from WCN to TST (DP6)																																																																			
Trench dredging for marine watermains installation	29/4/10	28/10/10				■																																																													
Backfilling for watermain	28/1/11	14/12/11													■																																																				
Reclamation Works at HKCEC Water Channel (DP3)																																																																			
Dredging at HKCEC Water Channel (Western Part)	1/6/10	1/8/10				■																																																													
Backfilling to +3.5mPD (Western Part)	17/8/10	6/2/11							■																																																										
Dredging at HKCEC Water Channel (Middle Part)	2/8/10	6/1/11							■																																																										
Backfilling to +3.5mPD (Middle Part)	21/2/11	1/6/11													■																																																				
Dredging at HKCEC Water Channel (Eastern Part)	1/12/12	31/12/12																																																																	
Backfilling to +3.5mPD (Eastern Part)	16/1/13	30/4/13																																								■																									




**Dredging & Reclamation Works Programme Summary
(based on Initial Works Programme Rev. 0)**

ID	Task Name	Duration	Start	2010 2011 2012 2013 2014 2015																							
				Q4	Q1	Q2	Q3	Q4	Q1	Q2	Q3	Q4	Q1	Q2	Q3	Q4	Q1	Q2	Q3	Q4	Q1	Q2	Q3	Q4			
1	HK/2009/02-Marine & Reclamation Works	2008 d	Thu 28/1/10	[Summary bar from Q4 2009 to Q4 2015]																							
2	Contract Commencement	0 d	Thu 28/1/10	[Milestone diamond at start of Q4 2009]																							
3	General	1879 d	Mon 22/2/10	[Summary bar from Q1 2010 to Q4 2015]																							
4	Submission & obtain approval for marine GI	21 d	Mon 22/2/10	[Task bar from Q1 2010 to Q1 2010]																							
5	Stage 1 Marine GI for reclamation	30 d	Mon 15/3/10	[Task bar from Q1 2010 to Q2 2010]																							
6	Engineer's Design review for Dredging of WCR1, WCR2 & WCR4	30 d	Mon 22/3/10	[Task bar from Q2 2010 to Q3 2010]																							
7	Relocation of New Star Ferry Pier	0 d	Tue 18/3/14	[Milestone diamond at start of Q3 2014]																							
8	Demolition of Existing Star Ferry Pier	100 d	Tue 18/3/14	[Task bar from Q3 2014 to Q4 2014]																							
9	Stage 2 Marine GI for Reclamation	14 d	Tue 18/3/14	[Task bar from Q3 2014 to Q3 2014]																							
10	Engineer's Design review for Dredging of WCR3	21 d	Tue 25/3/14	[Task bar from Q3 2014 to Q4 2014]																							
11	Complete Diversion of Hung Hing Road Traffic Back to Original	20 d	Fri 6/2/15	[Task bar from Q4 2014 to Q1 2015]																							
12	Excavate & remove top of d-wall for permanent seawall construction	50 d	Wed 25/2/15	[Task bar from Q1 2015 to Q2 2015]																							
13	Submarine Outfall	500 d	Tue 21/9/10	[Summary bar from Q3 2010 to Q4 2011]																							
14	Dredging, Laying and Backfilling of Submarine Outfall Pipe at Sea	500 d	Tue 21/9/10	[Task bar from Q3 2010 to Q4 2011]																							
15	Phase 1 - WCR1	158 d	Wed 21/4/10	[Summary bar from Q1 2010 to Q2 2010]																							
16	Mobilization of plants	1 d	Wed 21/4/10	[Task bar from Q1 2010 to Q1 2010]																							
17	Seabed dredging	63 d	Wed 21/4/10	[Task bar from Q1 2010 to Q2 2010]																							
18	Bedding Filling and Permanent seawall (precast cassion)	60 d	Tue 22/6/10	[Task bar from Q2 2010 to Q3 2010]																							
19	Bulk reclamation	37 d	Fri 20/8/10	[Task bar from Q3 2010 to Q4 2010]																							
20	Phase 2 - WCR2	149 d	Thu 1/3/12	[Summary bar from Q1 2012 to Q2 2012]																							
21	Mobilization of plants	1 d	Thu 1/3/12	[Task bar from Q1 2012 to Q1 2012]																							
22	Temp seawall and Seabed dredging	77 d	Thu 1/3/12	[Task bar from Q1 2012 to Q2 2012]																							
23	Bulk reclamation	73 d	Wed 16/5/12	[Task bar from Q2 2012 to Q3 2012]																							
24	Phase 3 - TWCR4 & WCR4	98 d	Sat 28/4/12	[Summary bar from Q2 2012 to Q3 2012]																							
25	Mobilization of plants	1 d	Sat 28/4/12	[Task bar from Q2 2012 to Q2 2012]																							
26	Temp Seawall and Seabed dredging	75 d	Sat 28/4/12	[Task bar from Q2 2012 to Q3 2012]																							
27	Bulk & temp reclamation	24 d	Wed 11/7/12	[Task bar from Q3 2012 to Q4 2012]																							
28	Phase 4 - WCR3	294 d	Tue 18/3/14	[Summary bar from Q3 2014 to Q4 2015]																							
29	Mobilization of plants	1 d	Tue 18/3/14	[Task bar from Q3 2014 to Q3 2014]																							
30	Seabed dredging for Permanent Seawall	112 d	Tue 18/3/14	[Task bar from Q3 2014 to Q4 2014]																							
31	Backfill and permanent seawall (precast cassion)	108 d	Tue 8/7/14	[Task bar from Q4 2014 to Q1 2015]																							
32	Bulk reclamation	74 d	Fri 24/10/14	[Task bar from Q1 2015 to Q2 2015]																							
33	Phase 5 - Construct Permanent Seawall Blocks along curved coastline & Remove TWCR4	105 d	Wed 15/4/15	[Summary bar from Q2 2015 to Q4 2015]																							
34	Mobilization of plants	1 d	Wed 15/4/15	[Task bar from Q2 2015 to Q2 2015]																							
35	Dredging and Filling for permanent seawall construction	50 d	Wed 15/4/15	[Task bar from Q2 2015 to Q3 2015]																							
36	Construction of Permanent Seawall Blocks for curved coastline	56 d	Wed 3/6/15	[Task bar from Q3 2015 to Q4 2015]																							
37	Remove temp seawall and reinstate the location of TWCR4	30 d	Mon 29/6/15	[Task bar from Q4 2015 to Q1 2016]																							

Project: Reclamation Works Programme
Date: Tue 9/3/10

Task		Summary		Rolled Up Progress		Project Summary	
Progress		Rolled Up Task		Split		Group By Summary	
Milestone		Rolled Up Milestone		External Tasks		Deadline	

Activity ID	Cal ID	Activity Description	Orig Dur	Early Start	Early Finish	Year																
						2010	2011	2012	2013	2014	2015	2016	2017									
TCBR1E (TS1 Area)																						
105	1	TCBR1E(TS1)-dredging+rockfill(pre. for seawall)	86	03DEC10*	26FEB11																	
110	1	TCBR1E (TS1)-temporary reclamation	69	28JAN11*	06APR11																	
155	1	TCBR1E (TS1)- removal of temporary reclamation	27	30JAN12*	25FEB12																	
TCBR4																						
100	1	Maintenance dredging for navigation safety for	7	20NOV10*	26NOV10																	
TCBR2 + TCBR3 (TS2 Area)																						
115	1	TCBR2&TCBR3(TS2)- Maintenance dredging for	5	15NOV10*	19NOV10																	
117	1	TCBR2&TCBR3(TS2)-dredge+rockfill seabed	64	16DEC11*	17FEB12																	
120	1	TCBR2&TCBR3(TS2) --temporary reclamation	115	26FEB12*	19JUN12																	
160	1	TCBR2&TCBR3(TS2-removal temporary reclamation	57	18AUG13*	13OCT13																	
TCBR1W (TS4 Area)																						
125	1	TCBR1W(TS4)-dredging+rockfill(pre. for seawall)	40	19DEC10*	27JAN11																	
130	1	TCBR1W(TS4) --temporary reclamation	68	28JAN11	05APR11																	
165	1	TCBR1W(TS4)--removal temporary reclamation	26	27OCT13*	21NOV13																	
TPCWAE																						
135	1	TPCWAE-dredging+rockfill(pre. for seawall)	55	03DEC10*	26JAN11																	
140	1	TPCWAE --temporary reclamation	77	27JAN11	13APR11																	
170	1	TPCWAE--removal temporary reclamation	28	28SEP13*	25OCT13																	
TPCWAW																						
145	1	TPCWAW-dredging+rockfill(pre. for seawall)	47	28OCT13*	13DEC13																	
150	1	TPCWAW --temporary reclamation	83	14DEC13	06MAR14																	
175	1	TPCWAW--removal temporary reclamation	50	02JUL15*	20AUG15																	

 Early Bar
 Progress Bar
 Critical Activity

?Primavera Systems, Inc.

EP02 CHINA STATE CONSTRUCTION ENGG LTD Sheet 1 of 1
 CONTRACT NO. HY/2009/15: CENTRAL WAN CHAI BYPASS- TUNNEL (CBTS SECTION)

Prepared based on IWP Rev. 0
 Date Prepared: 28 Oct 2010

Act ID	Description	Orig Dur	Early Start	Early Finish	2011												2012												2013					
					JAN	FEB	MAR	APR	MAY	JUN	JUL	AUG	SEP	OCT	NOV	DEC	JAN	FEB	MAR	APR	MAY	JUN	JUL	AUG	SEP	OCT	NOV	DEC	JAN	FEB	MAR			
Section I																																		
Contract Obligation																																		
1000	Commencement of Section I of works	0	20JAN11 *		◆ Commencement of Section I of works																													
Initial Works																																		
1050	Apply Marine notice to Marine Department	30	21JAN11	19FEB11	■ Apply Marine notice to Marine Department (dredg)																													
1060	Apply Marine notice to Marine Dept. Piling	30	18FEB11	19MAR11	■ Apply Marine notice to Marine Dept. Piling																													
1080	Apply FEP under EP356/2009	21	28FEB11	20MAR11	■ Apply FEP under EP356/2009																													
1081	Submission of Works Schedule for FEP	14	05MAR11	21MAR11	■ Submission of Works Schedule for FEP																													
1082	Submission of Location Plan for FEP	14	05MAR11	21MAR11	■ Submission of Location Plan for FEP																													
1083	Submission of Silt Curtain Deployment	14	05MAR11	21MAR11	■ Submission of Silt Curtain Deployment Plan																													
1084	Submission of Silt Screen Deployment Plan	14	05MAR11	21MAR11	■ Submission of Silt Screen Deployment Plan																													
1085	Submission Noise Management Plan	14	05MAR11	21MAR11	■ Submission Noise Management Plan																													
1090	Apply Dumping Permit	30	18FEB11	19MAR11	■ Apply Dumping Permit																													
1100	Apply CNP	30	31JAN11	01MAR11	■ Apply CNP																													
1110	Apply C&D waste disposal	30	20JAN11	18FEB11	■ Apply C&D waste disposal																													
1120	Apply Discharge licence	30	18FEB11	19MAR11	■ Apply Discharge licence																													
1130	Notification of chemical waste Producer	30	20JAN11	18FEB11	■ Notification of chemical waste Producer																													
1140	Notification to Labor Dept-Works Commencement	30	20JAN11	18FEB11	■ Notification to Labor Dept-Works Commencement																													
1150	Submit Risk Ass to MTR	21	28FEB11	20MAR11	■ Submit Risk Ass to MTR																													
1260	Erect Hoarding	30	28FEB11	29MAR11	■ Erect Hoarding																													
1270	Demarcation of Marine Site Boundary	21	01MAR11	21MAR11	■ Demarcation of Marine Site Boundary																													
1280	Working Site Office establishment	14	27JAN11	09FEB11	■ Working Site Office establishment																													
Monitoring																																		
1160	Takeover monitoring system from C1	0	21MAR11 *		◆ Takeover monitoring system from C1																													
1180	Commence Monitoring- ADMS,etc	0	21MAR11		◆ Commence Monitoring- ADMS,etc																													
Dredging Works																																		
1070	Submit Dredging MS	30	18FEB11	19MAR11	■ Submit Dredging MS																													
1075	Acceptance of Dredging MS	0		19MAR11	◆ Acceptance of Dredging MS																													
1078	Initial Hydrographic Survey	1	20MAR11	20MAR11	■ Initial Hydrographic Survey																													
1200	Initial Dredging Works for Piling	15	22MAR11	05APR11	■ Initial Dredging Works for Piling																													
1210	Final Hydrographic survey	3	07MAY12	09MAY12	■ Final Hydrographic survey																													
1220	Final Dredging Works	7	10MAY12	16MAY12	■ Final Dredging Works																													
1230	Confirmation Hydrographic survey	70	17MAY12	25JUL12	■ Confirmation Hydrographic survey																													
Piling Works																																		
1240	Submit stage platform MS	30	10FEB11	11MAR11	■ Submit stage platform MS																													
1250	Submit piling MS	30	10FEB11	11MAR11	■ Submit piling MS																													
P1000	Erect temporary Piling Platform	120	06APR11	03AUG11	■ Erect temporary Piling Platform																													
P1020	Pre-drilling	150	06JUN11	02NOV11	■ Pre-drilling																													
P1040	Bored Piles Construction and Testing	250	06JUL11	11MAR12	■ Bored Piles Construction and Testing																													
P1060	Drive Sheet piles along Bored piles	140	03NOV11	21MAR12	■ Drive Sheet piles along Bored piles																													
P1080	Dismantle Temporary Piling Platform	50	25FEB12	14APR12	■ Dismantle Temporary Piling Platform																													
P1100	Dive sheet piles beyond precast seawall	90	17JAN12	15APR12	■ Dive sheet piles beyond precast seawall																													
P1120	Trim pilehead to cut-off level	210	29SEP11	25APR12	■ Trim pilehead to cut-off level																													
P1140	Cut steel casing of bore piles	210	06OCT11	02MAY12	■ Cut steel casing of bore piles																													
P1160	Cut sheet piles to design level for box units	120	08JAN12	06MAY12	■ Cut sheet piles to design level for box units																													

Start date 20JAN11
 Finish date 19DEC12
 Data date 20JAN11
 Run date 05MAR11
 Page number 1A
 © Primavera Systems, Inc.

Contract no. HK/2010/06
 Wan Chai Development Phase II- Central-Wan Chai By pass over MTR Tsuen Wan Line

GAMMON-LEADER JV

Works Schedule of Marine Works for EP-356/2009

- Early bar
- Progress bar
- Critical bar
- Summary bar
- ◆ Start milestone point
- ◆ Finish milestone point

Activity ID	Activity Name	Rem Dur	Start	Finish	2012																
					September					October				November				December			
					0	27	03	10	17	24	01	08	15	22	29	05	12	19	26	03	10
3MRP - SEP 2012 to DEC 2012																					
02 - PRE-CONSTRUCTION WORKS																					
02.2 - Contractor's Submission																					
0220-1250	Concrete Ready Mix/Design Mix - Concrete Plant Trials & Approval	8	04-Aug-11 A	27-Sep-12	Concrete Ready Mix/Design Mix - Concrete Plant Trials & Approval																
0220-1300	Drainage Pipes & Materials - Procurement & Delivery	14	20-Jul-12 A	03-Oct-12	Drainage Pipes & Materials - Procurement & Delivery																
0220-1360	Tunnel Structures Materials - Submission	21	19-Jul-12 A	10-Oct-12	Tunnel Structures Materials - Submission																
0220-1370	Tunnel Structures Materials - ER Review/Comment	28	11-Oct-12	07-Nov-12	Tunnel Structures Materials - ER Review/Comment																
0220-1380	Tunnel Structures Materials - Resubmission	14	08-Nov-12	21-Nov-12	Tunnel Structures Materials - Resubmission																
0220-1390	Tunnel Structures Materials - ER Approval	21	22-Nov-12	12-Dec-12	Tunnel S																
0220-1470	Bridge Bearing - ER Review/Comment	0	27-Jul-12 A	05-Sep-12 A	Bridge Bearing - ER Review/Comment																
0220-1480	Bridge Bearing - Resubmission	0	09-Aug-12 A	10-Sep-12 A	Bridge Bearing - Resubmission																
0220-1490	Bridge Bearing - ER Approval	19	11-Sep-12 A	08-Oct-12	Bridge Bearing - ER Approval																
0220-1500	Bridge Bearing - Procurement & Delivery	195	09-Oct-12	21-Apr-13*																	
02.3 - Method Statement / Shop Drawings																					
0230-1280	MS Cut & Cover Tunnel ELS - Resubmission	14	13-Jul-12 A	03-Oct-12	MS Cut & Cover Tunnel ELS - Resubmission																
0230-1290	MS Cut & Cover Tunnel ELS - ER Approval	14	07-Aug-12 A	17-Oct-12	MS Cut & Cover Tunnel ELS - ER Approval																
0230-1350	MS Pre-cast Segment Launching - ER Review & Comment	28	20-Sep-12 A	17-Oct-12	MS Pre-cast Segment Launching - ER Review & Comment																
0230-1360	MS Pre-cast Segment Launching - Resubmission	28	18-Oct-12	14-Nov-12	MS Pre-cast Segment Launching - Resubmission																
0230-1370	MS Pre-cast Segment Launching - ER Approval	28	15-Nov-12	12-Dec-12	MS Pre-c																
0230-1470	MS Stressing Tendons - ER Review & Comment	0	08-Jun-12 A	27-Aug-12 A	MS Stressing Tendons - ER Review & Comment																
0230-1480	MS Stressing Tendons - Resubmission	14	08-Aug-12 A	03-Oct-12	MS Stressing Tendons - Resubmission																
0230-1490	MS Stressing Tendons - ER Approval	28	04-Oct-12	31-Oct-12	MS Stressing Tendons - ER Approval																
0230-1560	MS Precasting of Bridge Segment & Beam - Resubmission	9	02-Apr-12 A	28-Sep-12	MS Precasting of Bridge Segment & Beam - Resubmission																
0230-1570	MS Precasting of Bridge Segment & Beam - ER Approval	20	12-Apr-12 A	09-Oct-12	MS Precasting of Bridge Segment & Beam - ER Approval																
02.4 - Contractor's Design and Build Items																					
0240-1010	Temp Bridge "TA" Design - Prep & Submit	60	16-Dec-11 A	18-Nov-12	Temp Bridge "TA" Design - Prep & Submit																
0240-1020	Temp Bridge "TA" Design - ER review and comment	28	19-Nov-12	16-Dec-12	Ter																
0240-1105	Int. Noise Enclosure Structural Design - Submission	60	20-Sep-12*	18-Nov-12	Int. Noise Enclosure Structural Design - Su																
0240-1110	Int. Noise Enclosure Structural Design - ER Review/Resubmission	36	19-Nov-12	24-Dec-12																	
0240-1126	Noise Barrier Design Structural Design - Submission	60	08-Oct-12*	06-Dec-12	Noise Barrier Des																
0240-1127	Noise Barrier Design Structural Design - ER Review/Resubmission	36	07-Dec-12	11-Jan-13																	
0240-1150	Perm. Noise Enclosure Structural Design - Submission	60	20-Sep-12	18-Nov-12	Perm. Noise Enclosure Structural Design -																
0240-1160	Perm. Noise Enclosure Structural Design - ER Review/Resubmission	36	19-Nov-12	24-Dec-12																	
0240-1376	Cut & Cover Tunnel ELS Design - ER Review & Resubmission	18	14-Jun-12 A	07-Oct-12	Cut & Cover Tunnel ELS Design - ER Review & Resubmission																
0240-1377	Cut & Cover Tunnel ELS Design - ER Approval	21	08-Oct-12	28-Oct-12	Cut & Cover Tunnel ELS Design - ER Approval																
0240-1379	Cut & Cover Tunnel ELS Fabrication	60	29-Oct-12	27-Dec-12																	
02.5 - Bridge Segment/Beam Off-site Precasting																					
0250-1055	Segment/Beam - Mould Fabrication - Type T	30	14-May-12 A	19-Oct-12	Segment/Beam - Mould Fabrication - Type T																
0250-1060	Segment/Beam - Precasting of 1st Segment / Trial Segment	10	20-Aug-12 A	29-Sep-12	Segment/Beam - Precasting of 1st Segment / Trial Segment																
0250-1100	Segment/Beam - Geometry Control Design Approval	24	14-Dec-11 A	13-Oct-12	Segment/Beam - Geometry Control Design Approval																
0250-1500	Ready for Mass Production of Bridge Segment/Beam	0		15-Oct-12*	◆ Ready for Mass Production of Bridge Segment/Beam																
0250-1600.01	Bridge D3 Precast Segment Casting Pier D09 (17 segments)	35	15-Oct-12	19-Nov-12	Bridge D3 Precast Segment Casting Pier																
0250-1600.03	Bridge D3 Precast Segment Casting Pier D08 (8 segments)	17	19-Nov-12	06-Dec-12	Bridge D3 Precas																
0250-1600.05	Bridge D3 Precast Segment Casting Pier D10 (17 segments)	35	19-Nov-12	24-Dec-12																	

- Remaining Level of Effort
- Actual Level of Effort
- Actual Work
- Remaining Work
- Critical Remaining Work
- ◆ Milestone

Contract HY/2009/19

Three Month Rolling Programme (20 SEP 2012 to 19 DEC 2012)

3MRP

3MRP - SEP 2012 to DEC 2012

Page 1 of 6

Activity ID	Activity Name	Rem Dur	Start	Finish	2012																		
					September					October				November				December					
					0	27	03	10	17	24	01	08	15	22	29	05	12	19	26	03	10	17	
0250-1600.07	Bridge D3 Precast Segment Casting Pier D11 (17 segments)	35	06-Dec-12	10-Jan-13																			
05 - SECTION 2 & 2A OF THE WORKS																							
05.1 - Cut & Cover Tunnel Ch 4855-4932 (APS Footprint)																							
05.1.1 - D-Wall Construction																							
0511-1020	Site Establishment (Portion VIIIA and IXA)	18	30-Jul-12 A	11-Oct-12																			
0511-1030	D-wall N47-N51 Pre-drilling	2	30-Jul-12 A	21-Sep-12																			
0511-1035	D-wall N47-N51 Grouting for Existing Seawall Rubble Mound	7	20-Aug-12 A	29-Sep-12																			
0511-1040	D-wall N47-N51 Guide Wall	15	27-Sep-12	15-Oct-12																			
0511-1051	D-wall Panel N51 Construction	20	09-Oct-12	01-Nov-12																			
0511-1052	D-wall Panel N50 Construction	20	02-Nov-12	24-Nov-12																			
0511-1053	D-wall Panel N49 Construction	20	26-Nov-12	18-Dec-12																			
0511-1060	D-wall S49-S55 + BC39 Pre-drilling	12	17-Aug-12 A	04-Oct-12																			
0511-1065	D-wall S48-S55 + BC39 Guide Wall	12	05-Oct-12	18-Oct-12																			
0511-1071	D-wall Panel S55 Construction	15	19-Oct-12	06-Nov-12																			
0511-1075	Barrette BC39 Grouting for Existing Seawall Rubble Mound	6	19-Oct-12	26-Oct-12																			
0511-1072	D-wall Panel S54 Construction	18	07-Nov-12	27-Nov-12																			
0511-1073	D-wall Panel S53 Construction	24	28-Nov-12	26-Dec-12																			
05.2 - Cut & Cover Tunnel Ch 4932-5149																							
05.2.1 - D-Wall Construction																							
0521-1990.64	D-wall South Panel S80	0	22-Aug-12 A	28-Aug-12 A																			
0521-1945.20	Temp Bulk Headhead TBW1	0	16-Aug-12 A	01-Sep-12 A																			
0521-1945.10	Temp Bulk Headhead TBW5	3	17-Sep-12 A	22-Sep-12																			
0521-1945.25	Temp Bulk Headhead TBW2	0	03-Sep-12 A	13-Sep-12 A																			
0521-1945.15	Temp Bulk Headhead TBW3	6	27-Sep-12	04-Oct-12																			
0521-1945.30	Temp Bulk Headhead TBW4	6	09-Oct-12	15-Oct-12																			
0521-1830.30	D-wall Panel N66 Construction	0	11-Aug-12 A	07-Sep-12 A																			
0521-1830.35	D-wall Panel N65 Construction	0	10-Aug-12 A	19-Sep-12 A																			
0521-1835.55	D-wall Panel N62 Construction	18	28-Aug-12 A	11-Oct-12																			
0521-1835.15	D-wall Panel N64 Construction	15	12-Oct-12	30-Oct-12																			
0521-1835.16	D-wall Panel N63 Construction	24	31-Oct-12	27-Nov-12																			
0521-1835.20	D-wall Panel N60 Construction	0	03-Aug-12 A	22-Aug-12 A																			
0521-1835.65	D-wall Panel N56 Construction	0	16-Aug-12 A	01-Sep-12 A																			
0521-1835.25	D-wall Panel N57 Construction	18	20-Sep-12	11-Oct-12																			
0521-1835.70	D-wall Panel N58 Construction	24	12-Oct-12	09-Nov-12																			
0521-1835.30	D-wall Panel N59 Construction	24	10-Nov-12	07-Dec-12																			
0521-1835.71	D-wall Panel N52 Construction	6	03-Sep-12 A	26-Sep-12																			
0521-1990.41	D-wall South Panel S70	0	01-Aug-12 A	20-Aug-12 A																			
0521-1990.35	D-wall South Panel S63 Construction	0	08-Aug-12 A	24-Aug-12 A																			
0521-1990.37	D-wall South Panel S62 Construction	0	10-Aug-12 A	04-Sep-12 A																			
0521-1990.38	D-wall South Panel S64 Construction	18	01-Sep-12 A	11-Oct-12																			
0521-1990.69	D-wall South Panel S69 Construction	14	23-Aug-12 A	06-Oct-12																			
0521-1990.65	D-wall South Panel S68 Construction	18	08-Oct-12	29-Oct-12																			
0521-1990.66	D-wall South Panel S67 Construction	15	30-Oct-12	15-Nov-12																			
0521-1990.67	D-wall South Panel S66 Construction	15	16-Nov-12	03-Dec-12																			

- Remaining Level of Effort
- Actual Level of Effort
- Actual Work
- Remaining Work
- Critical Remaining Work
- ◆ Milestone

Contract HY/2009/19

Three Month Rolling Programme (20 SEP 2012 to 19 DEC 2012)

3MRP

3MRP - SEP 2012 to DEC 2012

Activity ID	Activity Name	Rem Dur	Start	Finish	2012																		
					September					October				November				December					
					0	27	03	10	17	24	01	08	15	22	29	05	12	19	26	03	10	17	
0521-1990.68	D-wall South Panel S65 Construction	21	04-Dec-12	28-Dec-12																			
0521-1990.75	D-wall South Panel S56 Construction	9	20-Sep-12	29-Sep-12																			
0521-1990.71	D-wall South Panel S57 Construction	18	02-Oct-12	22-Oct-12																			
0521-1990.72	D-wall South Panel S58 Construction	24	24-Oct-12	20-Nov-12																			
0521-1990.73	D-wall South Panel S59 Construction	30	21-Nov-12	26-Dec-12																			
0521-1990.31	D-wall South Panel S108	15	20-Oct-12	07-Nov-12																			
0521-1990.32	D-wall South Panel S107	15	12-Nov-12	28-Nov-12																			
0521-1990.76	D-wall South Panel N100 Construction	15	22-Nov-12	08-Dec-12																			
0521-1935	Deliver Sheet Piles	12	26-Sep-12*	10-Oct-12																			
0521-1938	Sheet Pile Pre-boring at Seawall Rubble Mound	18	08-Oct-12	29-Oct-12																			
0521-1940	Construct Temporary End Wall (Sheet Piles)	48	11-Oct-12	06-Dec-12																			
05.2.2 - Barrette Construction																							
0522-2210.58	Barrette Pile BC55	8	20-Aug-12 A	28-Sep-12																			
0522-2381	Barrette BC54 Guide Wall & Grouting	9	05-Oct-12	15-Oct-12																			
0522-2210.54	Barrette Pile BC54	12	16-Oct-12	30-Oct-12																			
0522-2210.71	Barrette Pile BC67	12	01-Nov-12	14-Nov-12																			
0522-2210.52	Barrette Pile BC52	12	31-Oct-12	13-Nov-12																			
0522-2210.50	Barrette Pile BC50	12	14-Nov-12	27-Nov-12																			
0522-2210.51	Barrette Pile BC51	12	28-Nov-12	11-Dec-12																			
0522-2310	Barrette BC45-BC49 Construction	34	12-Dec-12	22-Jan-13																			
05.3 - Box Culvert T1																							
0530-3033	Bay 4 - Base Sab	0	07-Aug-12 A	23-Aug-12 A																			
0530-3321	Bay 3 - Base Slab	0	23-Aug-12 A	07-Sep-12 A																			
0530-3322	Bay 4 - Wall & Roof Slab	6	27-Aug-12 A	26-Sep-12																			
0530-3323	Bay 3 - Wall & Roof Slab	8	27-Sep-12	06-Oct-12																			
0530-3040	Bay 3 and 4 - Backfilling	14	08-Oct-12	24-Oct-12																			
0530-3050	Bay 3 and 4 - Reinstatement	12	25-Oct-12	07-Nov-12																			
0530-3061	Bay 2 - Implement TTA	7	08-Nov-12	15-Nov-12																			
0530-3060	Bay 2 - Demolish Road Pavement	2	16-Nov-12	17-Nov-12																			
0530-3065	Bay 2 - Install Sheet Piles	7	19-Nov-12	26-Nov-12																			
0530-3071	Bay 2 - ELS + Blinding	10	27-Nov-12	07-Dec-12																			
0530-3072	Bay 2 - Base Slab	6	08-Dec-12	14-Dec-12																			
0530-3200	900 dia. Storm Drain - Sheetpiles + ELS (S100 to S107)	0	12-Jun-12 A	03-Sep-12 A																			
0530-3204	900 dia. Storm Drain - Laying of Pipe (S100 to S107)	0	04-Sep-12 A	17-Sep-12 A																			
0530-3205	900 dia. Storm Drain - Construct Manholes (S100 to 107)	14	19-Sep-12 A	06-Oct-12																			
0530-3208	900 dia. Storm Drain - Backfill + Extract Sheetpiles (S100 to S107)	11	08-Oct-12	19-Oct-12																			
0530-3230	1500 dia. Storm Drain - Sheetpiles (S95 to S99)	0	01-Aug-12 A	03-Sep-12 A																			
0530-3232	1500 dia. Storm Drain - ELS + Blinding (S95 to S99)	6	04-Sep-12 A	26-Sep-12																			
0530-3250	1500 dia. Storm Drain - Laying of Pipe (S95 to S99)	6	27-Sep-12	04-Oct-12																			
0530-3255	1500 dia. Storm Drain - Construct Manhole (S95 to S99)	12	05-Oct-12	18-Oct-12																			
0530-3324	1500 dia. Storm Drain - Backfill + Extract Sheetpiles (S95 to S99)	10	19-Oct-12	31-Oct-12																			
0530-3300	1500 dia. Storm Drain - Sheetpiles + ELS (S89 to S94)	15	01-Nov-12	17-Nov-12																			
0530-3302	1500 dia. Storm Drain - Laying of Pipe (S89 to S94)	6	19-Nov-12	24-Nov-12																			
0530-3305	1500 dia. Storm Drain - Construct Manhole (S89 to S94)	12	26-Nov-12	08-Dec-12																			

- Remaining Level of Effort
- Actual Level of Effort
- Actual Work
- Remaining Work
- Critical Remaining Work
- Milestone

Contract HY/2009/19

Three Month Rolling Programme (20 SEP 2012 to 19 DEC 2012)

3MRP

3MRP - SEP 2012 to DEC 2012

Activity ID	Activity Name	Rem Dur	Start	Finish	2012																		
					September					October				November				December					
					0	27	03	10	17	24	01	08	15	22	29	05	12	19	26	03	10	17	
0530-3308	1500 dia. Storm Drain - Backfill + Extract Sheetpiles (S89 to S94)	9	10-Dec-12	19-Dec-12																			
0530-3310	1500 dia. Storm Drain - Sheetpiles + ELS (S83 to S89)	12	19-Nov-12	01-Dec-12																			
0530-3325	1500 dia. Storm Drain - Laying of Pipe (S83 to S89)	6	03-Dec-12	08-Dec-12																			
0530-3326	1500 dia. Storm Drain - Construct Manhole (S83 to S89)	12	10-Dec-12	22-Dec-12																			
0530-3320	1500 dia. Temp Steel Pipe - Site Clearance + Sheet Piling	15	17-Sep-12 A	08-Oct-12																			
0530-3338	1500 dia. Temp Steel Pipe - ELS	12	09-Oct-12	22-Oct-12																			
0530-3348	1500 dia. Temp Steel Pipe - Pipe Laying	12	24-Oct-12	06-Nov-12																			
0530-3358	1500 dia. Temp Steel Pipe - Connect to Existing Box Culvert	18	07-Nov-12	27-Nov-12																			
06 - SECTION 3 OF THE WORKS																							
06.2 - Box Culvert U1																							
0620-2358	U1 Pre-bored H-pile Test Set-up	0	06-Aug-12 A	08-Sep-12 A																			
0620-2359	U1 Pre-bored H-pile Load Test	0	10-Sep-12 A	13-Sep-12 A																			
0620-2390	U1 Bay 5 to 8 Sheet Piles + ELS	21	30-Jul-12 A	15-Oct-12																			
0620-2400	U1 Construct Bay 6	24	16-Oct-12	13-Nov-12																			
0620-2410	U1 Construct Bay 7	24	31-Oct-12	27-Nov-12																			
0620-2420	U1 Construct Bay 8	24	14-Nov-12	11-Dec-12																			
0620-2430	U1 Construct Bay 5	24	28-Nov-12	26-Dec-12																			
0620-2480	U1 Bay 11 and 12 Sheetpiles + ELS	24	16-Oct-12	13-Nov-12																			
0620-2490	U1 Construct Bay 12	24	14-Nov-12	11-Dec-12																			
0620-2500	U1 Construct Bay 11	24	28-Nov-12	26-Dec-12																			
10 - SECTION X OF THE WORKS																							
10.1 - E/B Bridges (Bridge D, E and F)																							
10.1.1 - Marine Pier Construction																							
Pier F03 to F15																							
1011-1750.10	Pier F3 Dolphin Socketed H-Pile 1	3	16-Aug-12 A	22-Sep-12																			
1011-1750.20	Pier F3 Dolphin Socketed H-Pile 2	5	17-Aug-12 A	25-Sep-12																			
1011-1750.30	Pier F3 Dolphin Socketed H-Pile 3	8	18-Aug-12 A	28-Sep-12																			
1011-1990	Dismantle Piling Platform at Pier F3	6	04-Oct-12	10-Oct-12																			
1011-1995	Fabrication of Marine Pile Cap Cofferdam	18	04-Oct-12	25-Oct-12																			
1011-2150	F3 Pile Cap Construction	18	26-Oct-12	15-Nov-12																			
1011-2160	F3 Pier/Column Construction	12	16-Nov-12	29-Nov-12																			
1011-2170	F3 Crosshead Construction + Bearing	24	30-Nov-12	28-Dec-12																			
1011-1850.10	Pier F4 Dolphin Socketed H-Pile 1	0	25-May-12 A	31-Aug-12 A																			
1011-1850.20	Pier F4 Dolphin Socketed H-Pile 2	0	04-Jun-12 A	28-Aug-12 A																			
1011-1850.30	Pier F4 Dolphin Socketed H-Pile 3	0	25-Jun-12 A	04-Sep-12 A																			
1011-2000	Dismantle Piling Platform at Pier F4	6	04-Oct-12	10-Oct-12																			
1011-2180	F4 Pile Cap Construction	18	26-Oct-12	15-Nov-12																			
1011-2190	F4 Pier/Column Construction	12	16-Nov-12	29-Nov-12																			
1011-2200	F4 Crosshead Construction + Bearing	24	30-Nov-12	28-Dec-12																			
1011-1810.10	Pier F5 Dolphin Socketed H-Pile 1	0	18-Jul-12 A	10-Sep-12 A																			
1011-1810.20	Pier F5 Dolphin Socketed H-Pile 3	0	19-Jul-12 A	17-Sep-12 A																			
1011-1810.40	Pier F5 Dolphin Socketed H-Pile 5	0	17-Jul-12 A	13-Sep-12 A																			
1011-1810.30	Pier F5 Dolphin Socketed H-Pile 2	1	04-Aug-12 A	20-Sep-12																			
1011-1810.50	Pier F5 Dolphin Socketed H-Pile 4	12	28-Sep-12	12-Oct-12																			

- Remaining Level of Effort
- Actual Level of Effort
- Actual Work
- Remaining Work
- Critical Remaining Work
- ◆ Milestone

Contract HY/2009/19

Three Month Rolling Programme (20 SEP 2012 to 19 DEC 2012)

3MRP

3MRP - SEP 2012 to DEC 2012

Activity ID	Activity Name	Rem Dur	Start	Finish	2012															
					September						October				November				December	
					00	27	03	10	17	24	01	08	15	22	29	05	12	19	26	03
1011-1810.60	Pier F5 Dolphin Socketed H-Pile 6	12	13-Oct-12	27-Oct-12							Pier F5 Dolphin Socketed H-Pile 6									
1011-2010	Dismantle Piling Platform at Pier F5	6	29-Oct-12	03-Nov-12							Dismantle Piling Platform at Pier F5									
1011-2210	F5 Pile Cap Construction	18	16-Nov-12	06-Dec-12							F5 Pile Cap Const									
1011-2220	F5 Pier/Column Construction	12	07-Dec-12	20-Dec-12																
1011-1790.10	Pier F6 Dolphin Socketed H-Pile 1	15	24-Aug-12 A	08-Oct-12							Pier F6 Dolphin Socketed H-Pile 1									
1011-1790.20	Pier F6 Dolphin Socketed H-Pile 2	17	24-Aug-12 A	10-Oct-12							Pier F6 Dolphin Socketed H-Pile 2									
1011-1790.30	Pier F6 Dolphin Socketed H-Pile 3	19	25-Aug-12 A	12-Oct-12							Pier F6 Dolphin Socketed H-Pile 3									
1011-1790.40	Pier F6 Dolphin Socketed H-Pile 5	21	25-Aug-12 A	15-Oct-12							Pier F6 Dolphin Socketed H-Pile 5									
1011-1790.50	Pier F6 Dolphin Socketed H-Pile 4	12	16-Oct-12	30-Oct-12							Pier F6 Dolphin Socketed H-Pile 4									
1011-1790.60	Pier F6 Dolphin Socketed H-Pile 6	12	31-Oct-12	13-Nov-12							Pier F6 Dolphin Socketed H-Pile 6									
1011-2020	Dismantle Piling Platform at Pier F6	6	14-Nov-12	20-Nov-12							Dismantle Piling Platform at Pier F6									
1011-2240	F6 Pile Cap Construction	18	21-Nov-12	11-Dec-12							F6 Pile Ca									
1011-2250	F6 Pier/Column Construction	12	12-Dec-12	26-Dec-12																
1011-1910.10	Pier F7 Dolphin Socketed H-Pile 1	15	20-Sep-12	08-Oct-12							Pier F7 Dolphin Socketed H-Pile 1									
1011-1910.20	Pier F7 Dolphin Socketed H-Pile 2	18	20-Sep-12	11-Oct-12							Pier F7 Dolphin Socketed H-Pile 2									
1011-1910.30	Pier F7 Dolphin Socketed H-Pile 3	21	24-Sep-12	18-Oct-12							Pier F7 Dolphin Socketed H-Pile 3									
1011-1910.40	Pier F7 Dolphin Socketed H-Pile 5	24	24-Sep-12	22-Oct-12							Pier F7 Dolphin Socketed H-Pile 5									
1011-1910.50	Pier F7 Dolphin Socketed H-Pile 4	12	24-Oct-12	06-Nov-12							Pier F7 Dolphin Socketed H-Pile 4									
1011-1910.60	Pier F7 Dolphin Socketed H-Pile 6	12	07-Nov-12	20-Nov-12							Pier F7 Dolphin Socketed H-Pile 6									
1011-2030	Dismantle Piling Platform at Pier F7	6	21-Nov-12	27-Nov-12							Dismantle Piling Platform at P									
1011-2270	F7 Pile Cap Construction	18	12-Dec-12	03-Jan-13																
1011-1862.10	Pier F8 Dolphin Socketed H-Pile 1	10	14-Aug-12 A	02-Oct-12							Pier F8 Dolphin Socketed H-Pile 1									
1011-1862.11	Pier F8 Dolphin Socketed H-Pile 2	12	14-Aug-12 A	04-Oct-12							Pier F8 Dolphin Socketed H-Pile 2									
1011-1862.12	Pier F8 Dolphin Socketed H-Pile 3	14	15-Aug-12 A	06-Oct-12							Pier F8 Dolphin Socketed H-Pile 3									
1011-1862.13	Pier F8 Dolphin Socketed H-Pile 5	16	15-Aug-12 A	09-Oct-12							Pier F8 Dolphin Socketed H-Pile 5									
1011-1862.14	Pier F8 Dolphin Socketed H-Pile 4	12	21-Nov-12	04-Dec-12							Pier F8 Dolphin Soc									
1011-1862.15	Pier F8 Dolphin Socketed H-Pile 6	12	05-Dec-12	18-Dec-12																
1011-1806	Pier F9 Marine Bored Pile (Low Headroom)	9	20-Aug-12 A	29-Sep-12							Pier F9 Marine Bored Pile (Low Headroom)									
1011-2120	Marine bored pile testing F9	18	02-Oct-12	22-Oct-12							Marine bored pile testing F9									
1011-1802	Pier F9 Dolphin Socketed H-Pile (6 nos.)	42	14-Nov-12	03-Jan-13																
1011-1981	Pier F10 Marine Bored Pile (Low Headroom)	24	07-Sep-12 A	18-Oct-12							Pier F10 Marine Bored Pile (Low Headroom)									
1011-2125	Marine bored pile testing F10	18	19-Oct-12	09-Nov-12							Marine bored pile testing F10									
1011-2130	Marine bored pile testing F11	12	20-Sep-12	04-Oct-12							Marine bored pile testing F11									
1011-1827	Pier F12 Marine Bored Pile (Low Headroom)	35	19-Oct-12	29-Nov-12							Pier F12 Marine Bored Pile									
1011-2135	Marine bored pile testing F12	18	30-Nov-12	20-Dec-12																
1011-1900	Pier F13 Marine Bored Pile	0	08-Aug-12 A	31-Aug-12 A							Pier F13 Marine Bored Pile									
1011-1905	Pier F13 Marine Bored Pile (Low Headroom)	35	30-Nov-12	11-Jan-13																
1011-1785	Pier F14 Marine Bored Pile	0	14-Aug-12 A	04-Sep-12 A							Pier F14 Marine Bored Pile									
Pier F01 to F02																				
1011-2752	Marine bored pile F1A-4	0	04-Aug-12 A	23-Aug-12 A							Marine bored pile F1A-4									
1011-2753	Marine bored pile F1A-3	0	25-Aug-12 A	06-Sep-12 A							Marine bored pile F1A-3									
1011-2730	Dolphin socketed H-pile pier F1-P1	21	20-Sep-12	15-Oct-12							Dolphin socketed H-pile pier F1-P1									
1011-2732	Dolphin socketed H-pile pier F1-P2	24	20-Sep-12	18-Oct-12							Dolphin socketed H-pile pier F1-P2									
1011-2735	Dolphin socketed H-pile pier F1-P3	27	20-Sep-12	22-Oct-12							Dolphin socketed H-pile pier F1-P3									

- Remaining Level of Effort
- Actual Level of Effort
- Actual Work
- Remaining Work
- Critical Remaining Work
- ◆ Milestone

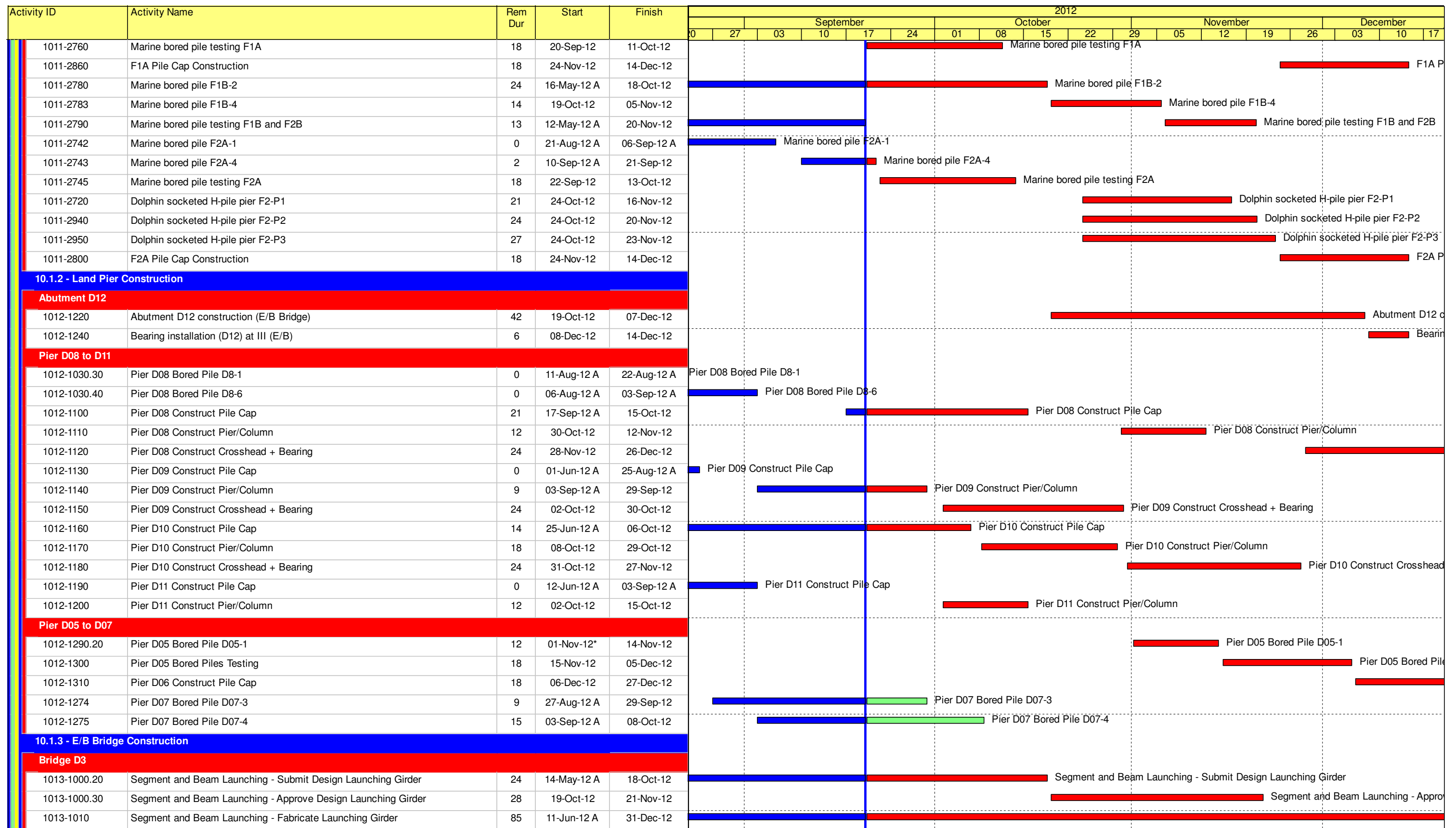
Contract HY/2009/19

Three Month Rolling Programme (20 SEP 2012 to 19 DEC 2012)

3MRP

3MRP - SEP 2012 to DEC 2012

Page 5 of 6



- Remaining Level of Effort
- Actual Level of Effort
- Actual Work
- Remaining Work
- Critical Remaining Work
- ◆ Milestone

Contract HY/2009/19

Three Month Rolling Programme (20 SEP 2012 to 19 DEC 2012)

3MRP

3MRP - SEP 2012 to DEC 2012